



OYO STATE GEOGRAPHIC INFORMATION SERVICE



Oyo State Geographic Information Service Presentation

Company Overview



- **GIS/Transport** was founded in 1994 to provide high end GIS planning services for the DOT (Department of Transport, hence the name) and was established in Nigeria in 1999.
- **GIS/Transport** is a leading provider of digital cartographic services and of highly customised Geographic- and Land Information Systems, and in the delivery of turnkey projects supporting the establishment of modern computerised government agencies, including analysis, long term strategies, design, software development, implementation and customisation, capacity building and support, organisational structures and standard operational procedures.
- **GIS/Transport** works with several international space agencies to provide high resolution satellite imagery and the required value added services and is the representative of almost all satellite imagery providers, PCI Geomatica and Vexcel (photogrammetric cameras) in Nigeria.

Company Overview



- **GIS/Transport** solutions are designed to meet the sector's needs:
 - Mapping and Cartography
 - Geographic Information Systems
 - Satellite Data
 - Remote Sensing and Digital Image Processing
 - Digital Orthophoto and Terrain Model
 - Land Administration
 - Applications Development

Clients



Public Sector

- Federal Ministry of Science & Technology:
National Space Research and Development Agency (NASRDA)
- Federal Ministry of Aviation, Meteorological Department
- Office of the Surveyor general of the Federation (OSGOF)
- Delta State Government
- Nasarawa State Government (NAGIS)
- Gombe State Government (GOGIS)
- Kaduna State Government (KADGIS)
- Oyo State Government (OYOGIS)
- Edo State Government (EDOGIS)



Public Sector

- Federal Ministry of Works
- Federal Ministry of Transportation
- Federal Ministry of Environment
- National Boundary Commission

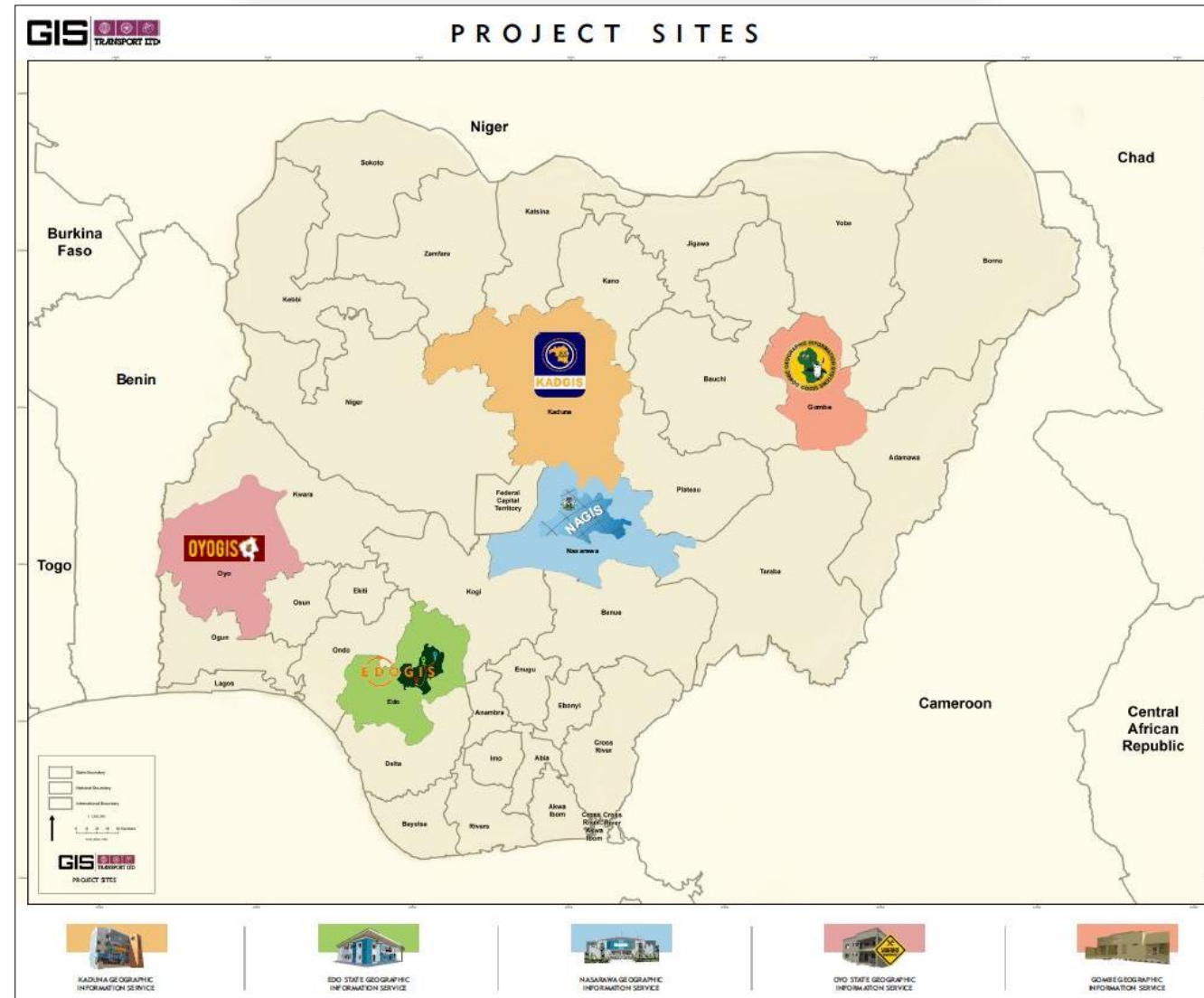
Private Sector

- Setraco Nigeria Limited
- Salini Nigeria Limited
- Jitto Construction Nigeria Limited
- ACE Consulting Engineers
- Julius Berger Nigeria Plc
- Dantata & Sawoe Ltd
- Sunrise Hills Development

Clients

Digital Aerial Mapping and Land Administration Projects in Nigeria

- Nasarawa State Government (NAGIS)
- Gombe State Government (GOGIS)
- Kaduna State Government (KADGIS)
- Oyo State Government (OYOGIS)
- Edo State Government (EDOGIS)





OYO STATE GEOGRAPHIC INFORMATION SERVICE



Oyo State Geographic Information Service Project Status

Executive Summary

- The project aims to provide the Oyo state government with an Enterprise GIS solution that can support the delivery of services and products to all Oyo state government Ministries, Departments and Agencies (MDAs), professional bodies, stakeholder associations and the general public.
- Ultimately the OYOGIS Services will cover all areas and all technical, natural and socio-economic aspects of Oyo state. In this first project the implementation is focused on comprehensive Digital Mapping of Oyo State, the Central Service Agency, E-Payment, specialised End-User units in Survey, Lands, Physical Planning, Environment, Budget Planning and IUFMP and selected Zonal Offices starting with Ibadan Zonal Office.
- To ensure quick operations, fast acceptance, visible results and early benefits, selected aspects of the OYOGIS are bundled in a Phase 1 package with training in technology and standard operating procedures for all participants, and an accelerated Data Services package.
- Project consists of 3 phases:
 - (i) Aerial Mapping (Ibadan) and GIS Fast Tracking
 - (ii) Central Services (Full Scale GIS Setup)
 - (iii) End-user Roll-out phase

Motivation

- The Oyo Government vision is to imbed a modern service culture within the MDAs leading to the delivery of efficient services and products to the citizens of Oyo state, and to encourage and attract investors and entrepreneurs. Specific focus areas have been identified and include:
 - Health & Education
 - Agriculture & Agro allied industries
 - Infrastructure & Urban Renewal
 - Poverty alleviation
- A key development goal is to strategically define and develop Ibadan as a “twin city” to Lagos, and to encourage business, industry and private citizens to locate in the Ibadan Urban and Peri-urban areas as an alternative to Lagos. The completion of the Federal Lagos Ibadan highway will significantly improve communications and make commuting between the two cities a realistic endeavour.
- It is expected that the demand on land will increase dramatically and the efficient delivery of secure, bankable land titles will be a prerequisite to the expected increase in government internally generated revenue through land transactions and the subsequent investments by the private sector.
- The Oyo Geographic Information Service (OYOGIS) will provide the central core services for robust, fast computerized land administration, mapping and other data related services that can support development.

Justification

- A number of MDAs have been active in gathering data and in the production of maps of various kinds. However, this has been undertaken in small, disconnected & incomplete initiatives and projects, with no guiding strategy.
- There is a need for a coherent and comprehensive gathering of data and the production of a common *Base Map* for the state, where different data sets from MDAs will be gathered on a common platform, and can produce information that will lead to informed decision making.
- In addition to the base map there are a number of other immediate needs, including the *Automation of Processes* in the Ministry of Lands, detailed maps to identify flood risk areas, buildings, roads and other infrastructure for the IU IUFMP PIU, and the gathering, collation and analysis of *Socio-Economic Data* to aid Economic and Budget Planning.

Benefits

Enterprise GIS is an internationally accepted foundation for *Good Governance*, supporting *Access to Information* that can support decision making in all sectors.

Strategic Benefits

- Sustainable Development
- Economic and budget planning
- Competitive advantage
- Improved public image

Operational benefits

- Staff training leading to greater capacity and sustainability
- Increased efficiency
- Improved MDA organizational integration
- Improved decision making
- Information and knowledge advantage

External benefits

- Professionals, business and industry and citizens using the published data etc. for their own planning & decision making
- Investment and Economic Growth

Revenue Generation

The bulk of revenues will emanate from the Ministry of Lands, Housing and Urban Development. New application forms and billing for all services and products will be developed and implemented with the support of OYOGIS, and will include the following revenue heads:

Recertification of Certificates of Occupancy

- Approximately 50,000 Certificates of Occupancy (C-of-O) have been issued by the Oyo State government during the last years. The automated Land Information System will require the recertification of all land titles, with the owners receiving a new C-of-O, secured and backed by the robust electronic database. A suitable charge will be applied to all C-of-O recertification's.

Statutory Right of Occupancy

- All new applications for Statutory Right of Occupancy (R-of-O) will be processed and billed by OYOGIS systems, including the issuance of C-of-Os, with bills to include *Application and Processing, Development Fee and Ground Rent, R-of-O Fees, Charting and C-of-O Premium*.

Ground Rent

- The identification billing of outstanding *Ground Rent*.

Land Use Charge

- The Land use charge can be calculated by OYOGIS systems.

Land Transactions

- All land transactions including the *Registration of Deeds and Assignments, Legal Searches*, and other specialised services such as *Site and Services* will be automated and bills produced.

Development Control

- The linked GIS and LIS systems will enable the easy identification and billing of *Development Contraventions*.

Revenue Generation

Compulsory Acquisition and Compensation

- The implementation of the IUFMP will require the acquisition of land in areas identified as under threat of flooding and/or where project mitigation infrastructure will be constructed, with current titled land owners compensated. Land acquisition and compensation will also be undertaken to develop new government layouts.

Sale of Government Land (Plots)

- Fast processing of applications for government land.

Maps and data products

- The primary clients for these products are Oyo State MDAs, professionals and citizens
- Sales of maps to public

Environment

- Contraventions including the discharge of sewerage and effluent into water bodies, the dumping of waste, and air and noise pollution will be identified and billed.

Other OYOGIS Revenue Streams

- The design of new districts for housing, business and industry can be undertaken in a strategic manner. Utilising the geospatial information and data, town planners will be able to develop new sustainable housing and business districts, addressing housing and socio-economic needs, and providing the facilities and services required by modern business.

Revenue Generation References



EDOGIS

- 60 professional staff
- Now only “Block B”, staff to double with “Block D”, all for systematic programs

- Only “walk in” applications for title
- Systematic programs only just started

Land Use Charges, Systematic Registration & Recertification

- Monthly revenue pays for monthly instalment for loan, no budget use



KADGIS

- 400 professional staff (150 for property registration)

Staff to triple in the next 2 years

- Mostly “walk in” applications for title
- Systematic property registration gives many CofO and little revenue (>1%)
- Revenue from direct allocations 60%
- Revenue from recertification 30%



NAGIS

- 100 professional staff (60 NAGIS Office, 20 in the field, 20 Ministry)
- Mostly “walk in” applications for title
- Systematic property registration only just started
- Revenue from allocations only just starting

EDOGIS	2019	2,901 MN
KADGIS	2019	9,074 MN
NAGIS	2019	3,097 MN

Milestones

- 2017 03 08 Award Letter
- 2017 04 18 Contract Signed
- 2017 08 18 First Phase 1 Payment
- 2017 10 19 70cm satellite imagery on system
- 2017 11 29 OYOGIS Project office opened – First OYOGIS staff (4)
- 2018 12 15 10cm Orthophoto on system
- 2018 01 23 Commenced Data Capture
- 2018 01 28 New digital Certificate of Occupancy forms delivered
- 2018 04 19 OYOGIS Logo submitted
- 2018 04 16 OYOGIS Merlin software platform launched
- 2019 01 25 Second OYOGIS office opened – 18 computer seats
- 2019 11 18 First Floor Offices opened – 32 computer seats

Achievements and Deliverables

- **Office Infrastructure**
 - Project Office opened November 2017
 - Second Office opened 8 February 2018 – including 3 temporary **customer service desks**
 - Four new Offices added 18 November 2019 – including temporary archive and map shop
- **Technical Infrastructure**
 - Sever, network and peripherals
 - 65 computer seats
- **Staff Assessment, Capacity Building and Training**
 - 221 staff have been assessed
 - 25 staff were transferred to OYOGIS from ministry of lands, have undergone training
- **Data Capture**
 - Layouts plan, Survey plans, and TPWs
 - Survey Beacons
 - Index Cards
 - Land Files
- **Mapping**
 - Map Production and Ready for Map Selling
- **End-User**
 - CofO and concent processing
- **Structured Reporting**
 - 120 detailed weekly Project Progress Reports
 - Quarterly Deliverable and Achievement Reports

Digital Mapping

- Digital Aerial Mapping includes a State-Map 1:25,000 with Transportation, Hydrology, Place-names and Land-cover, an Orthophoto Map with 10 cm resolution covering the Ibadan Urban area and 5 major cities, a 70cm resolution satellite image map for the rest of the state.
- The Orthophoto coverage comes with the Terrain Model and the Contour Lines that are essential for the 3D representation of water courses and water bodies that are required for environmental and engineering planning. As well as necessary design required for erosion control for the entire state.



Orthophoto

- Orthophoto images with 10 cm resolution covering the Ibadan Urban area and 5 major cities (Kishi, Shaki, Iseyin, Oyo, Ogbomoso) were captured using an aircraft Diamond DA42MPP and Vexcel Ultracam LP, Applanix 510 POS AV GPS / INS, SOMAG UltraMount.



OYO STATE ORTHOPHOTO AOI



Orthophoto

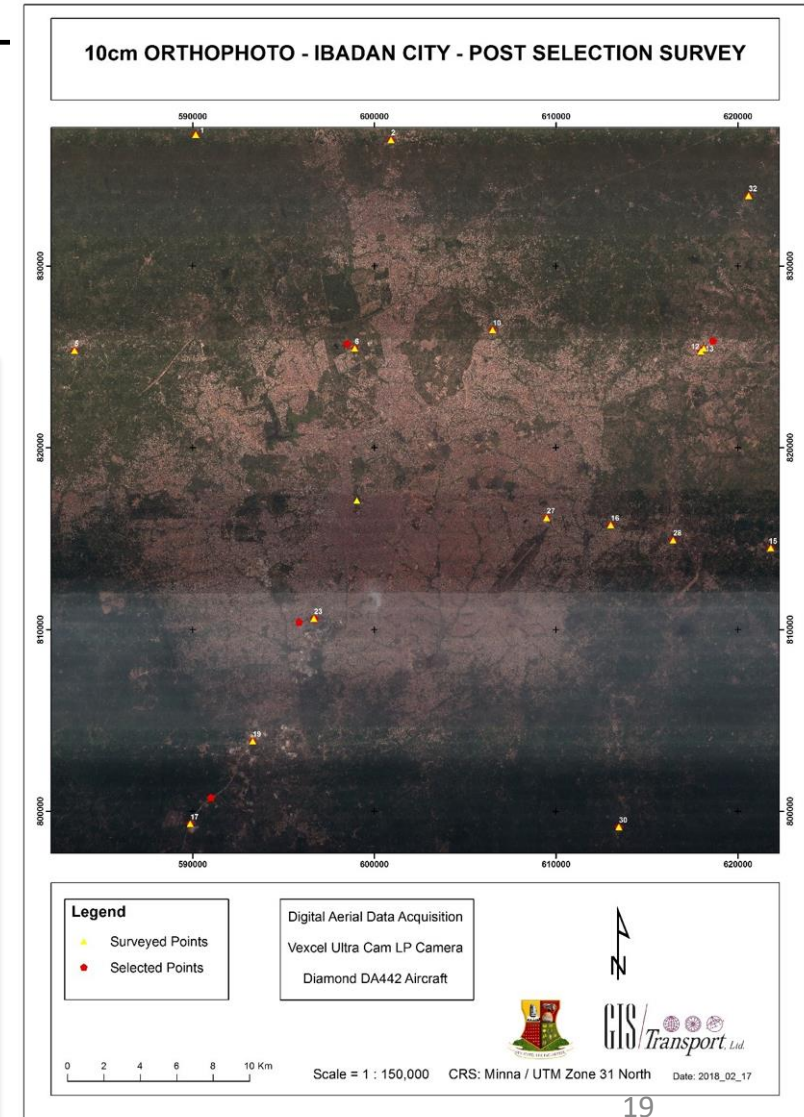
- Ground Control Points were created before the commencement of the flight mission to increase Orth-mosaic accuracy and are placed homogeneously in the AOI.



Orthophoto

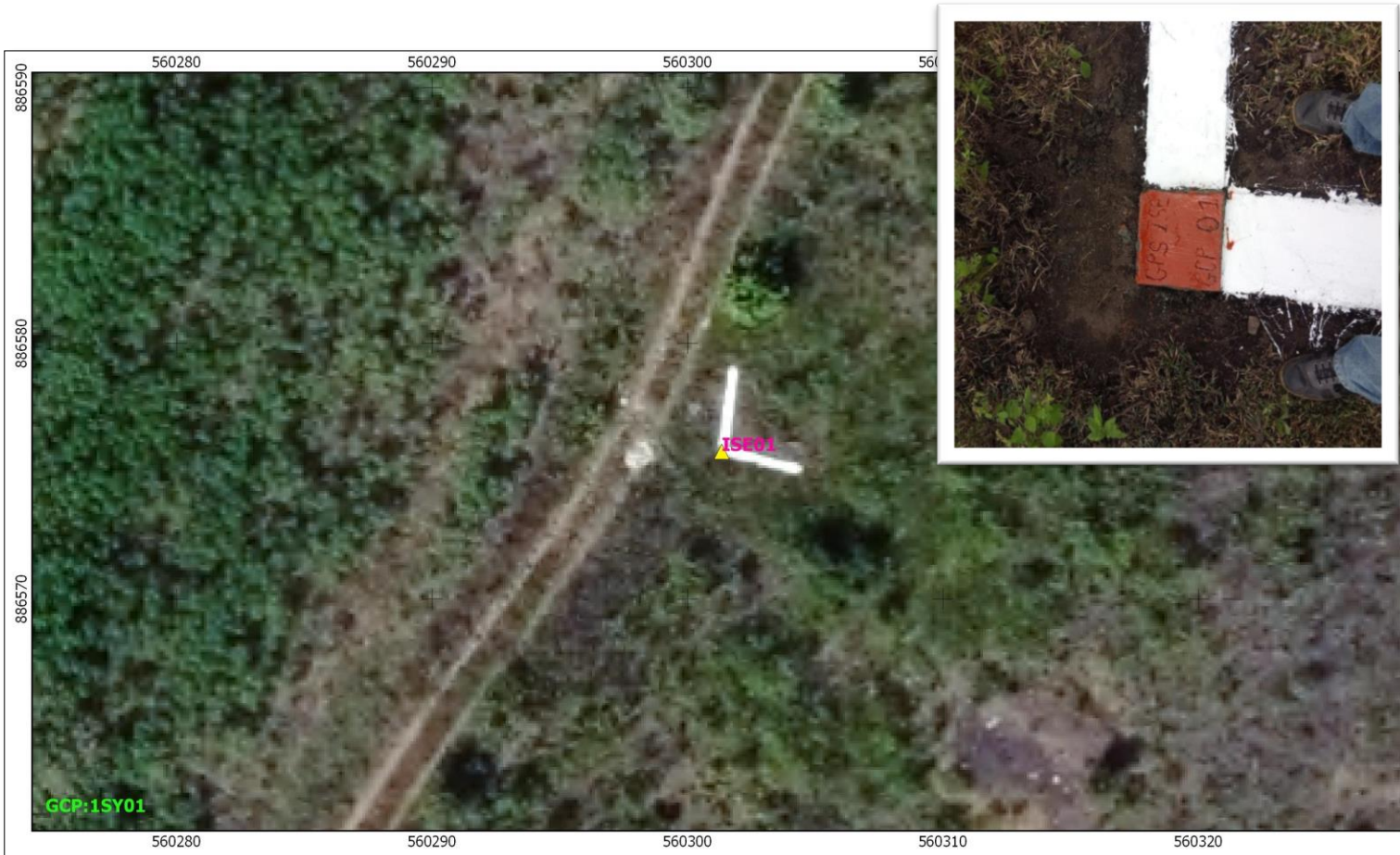
The orthophoto is compiled from a mosaic of corrected photographs, composing a continuous, accurate model of the entire state, at a consistent map scale; homogenous, all-encompassing, and encyclopaedic, then fixed in place by ground truth positions derived from careful, static, days-long GPS measurements, processed by the Precise Point Positioning services of the American, Canadian, and Australian governments, providing an accurate georeferencing.

After that, the quality control work commenced together with ministry surveyors and was complete within 45 days.



Orthophoto

- Ground Control Points located on the Orth-photo using surveyed coordinates to confirm its accuracy.



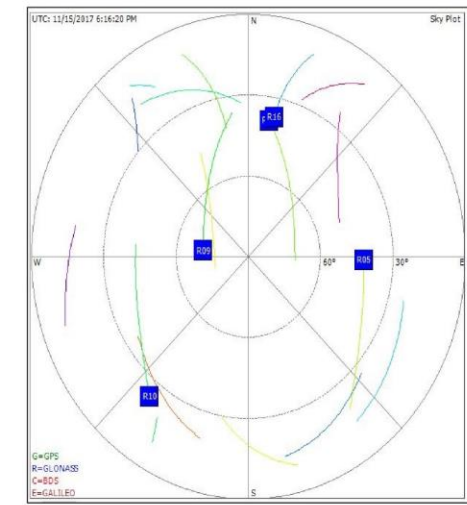

10CM Orthophoto Ibadan City GCP Survey
Digital Aerial Data Acquisition with Vexcel Ultracam LP camera on Diamond DA42 MPP aircraft

Survey Instrument: Hi-Target GNSS V.30
Serial Number: 3005294
Surveyor: Joseph

Observed Data
Start Time: 6:16:20 PM
End Time: 7:47:20 PM
Sat Number: 14
Mean PDOP: 1.6
Instrument Height: 2.112 m
Observed on: 2017_11_15

Coordinate Reference System:
Minna / UTM Zone 31 North
Easting: 620675 m
Northing: 825830 m
Ellip Height: 210 m

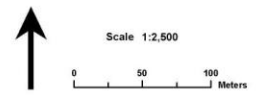
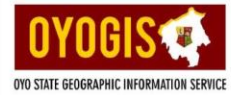
1:200
0 2 4 6 8 m



Orthophoto Samples



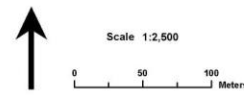
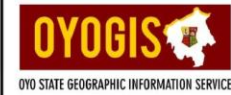
IBADAN ORTHOPHOTO



COORDINATE SYSTEM
Grid: Minna UTM Zone 31N
Projection: Transverse Mercator
False Easting: 500000.0
False Northing: 0.0
Central Meridian: 8.0
Scale Factor: 0.9998
Latitude Of Origin: 0.0
Linear Unit: (1.0)



OGBOMOSO ORTHOPHOTO



COORDINATE SYSTEM
Grid: Mirna UTM Zone 31N
Projection: Transverse Mercator
False Easting: 500000.0
False Northing: 0.0
Central Meridian: 1.0
Scale Factor: 0.9996
Latitude Of Origin: 0.0
Linear Unit: (1.0)



Orthophoto Samples

10 cm resolution



Orthophoto Samples

10 cm resolution

KISHI ORTHOPHOTO



OYO STATE GEOGRAPHIC INFORMATION SERVICE

Scale 1:2,500
0 50 100 Meters

COORDINATE SYSTEM
 Grid: Merca UTM Zone 31N
 Projection: Transverse Mercator
 False Easting: 500000.0
 False Northing: 0.0
 Central Meridian: 3.0
 Scale Factor: 0.9996
 Latitude Of Origin: 0.0
 Linear Unit: (1.0)

GIS TRANSPORT LTD
 Date: 2020 / 01 / 22
 KISHI ORTHOPHOTO_001_A3

SHAKI ORTHOPHOTO



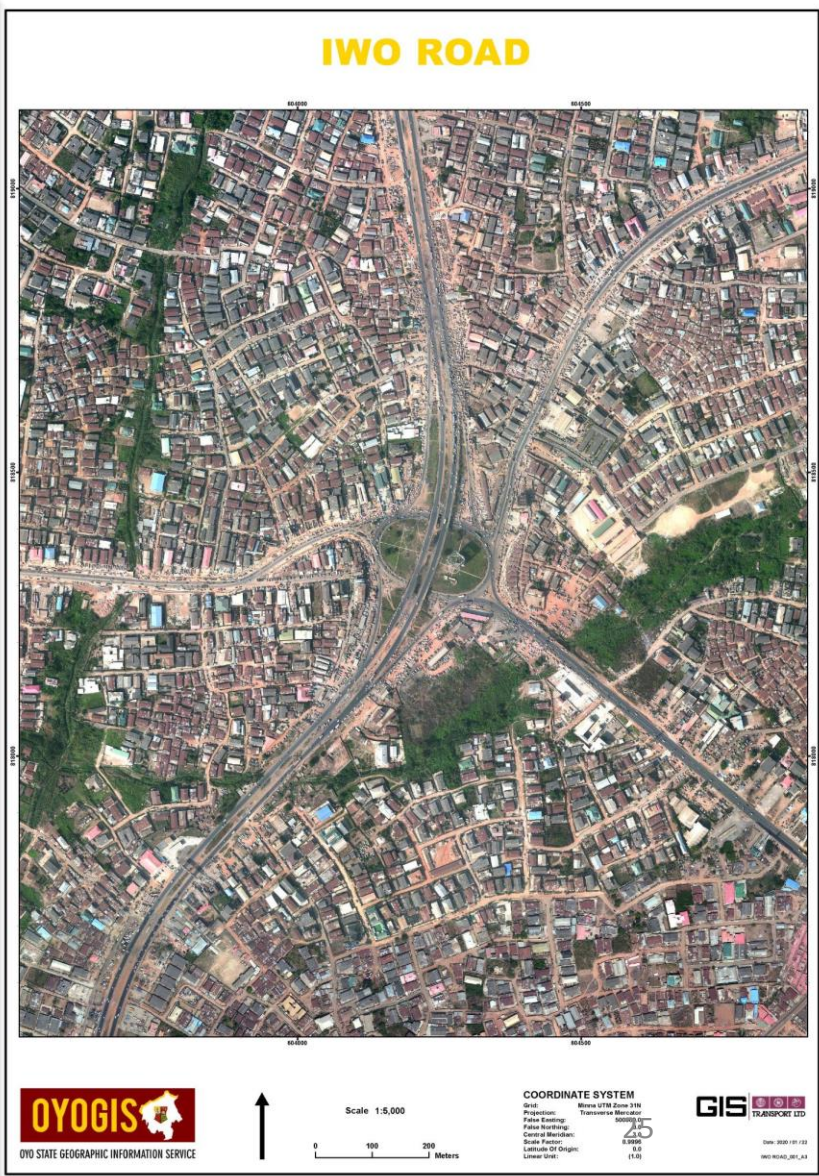
OYO STATE GEOGRAPHIC INFORMATION SERVICE

Scale 1:2,500
0 50 100 Meters

COORDINATE SYSTEM
 Grid: Merca UTM Zone 31N
 Projection: Transverse Mercator
 False Easting: 500000.0
 False Northing: 0.0
 Central Meridian: 3.0
 Scale Factor: 0.9996
 Latitude Of Origin: 0.0
 Linear Unit: (1.0)

GIS TRANSPORT LTD
 Date: 2020 / 01 / 22
 SHAKI ORTHOPHOTO_001_A3

Map Samples



Contour Lines

The Orthophoto coverage includes a digital terrain model and the contour lines that are essential for 3D representation of water courses and water bodies required for environmental and engineering planning.

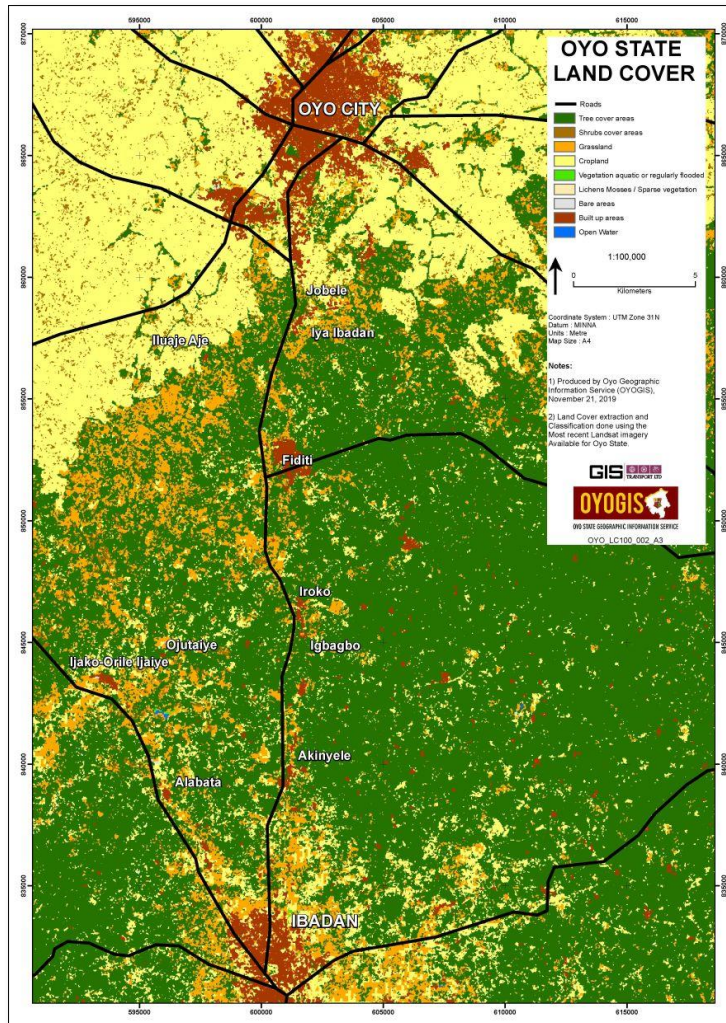


OYO State Geospatial Database

- The data captured, together with other data sets, can provide decision makers with customised maps and analysis, particularly useful for resource allocation, utility management, cooperative development, professional materials for donor funding proposals.

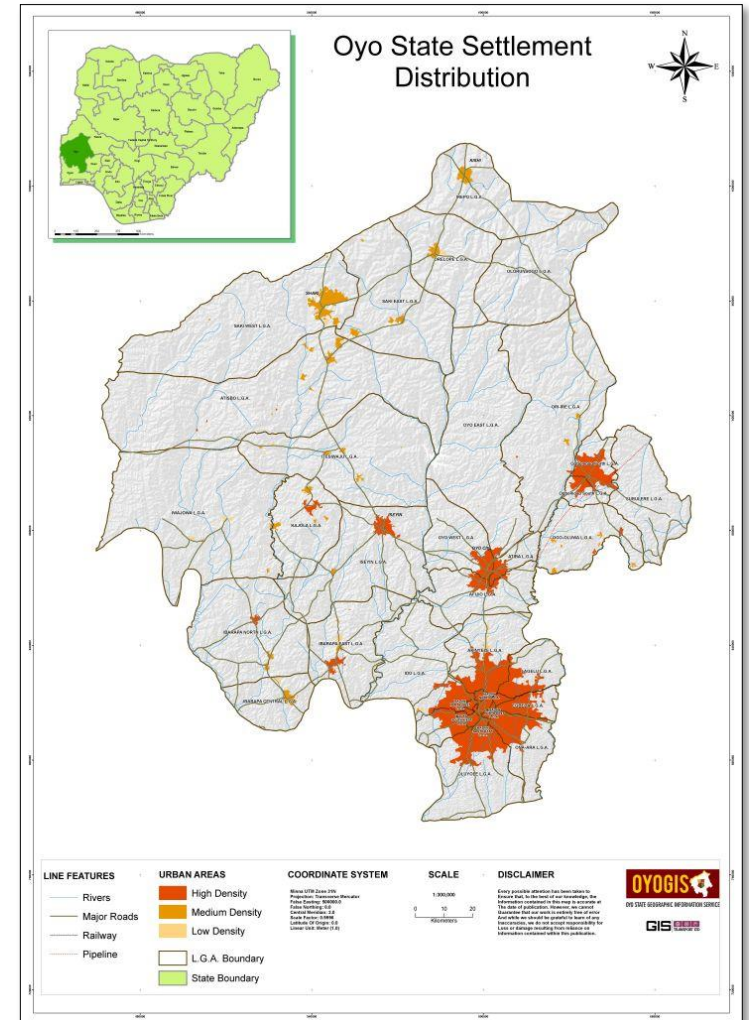


Map Samples



Land Cover Land Use Map between Ibadan city and Oyo city

Settlement Distribution Map for Oyo state



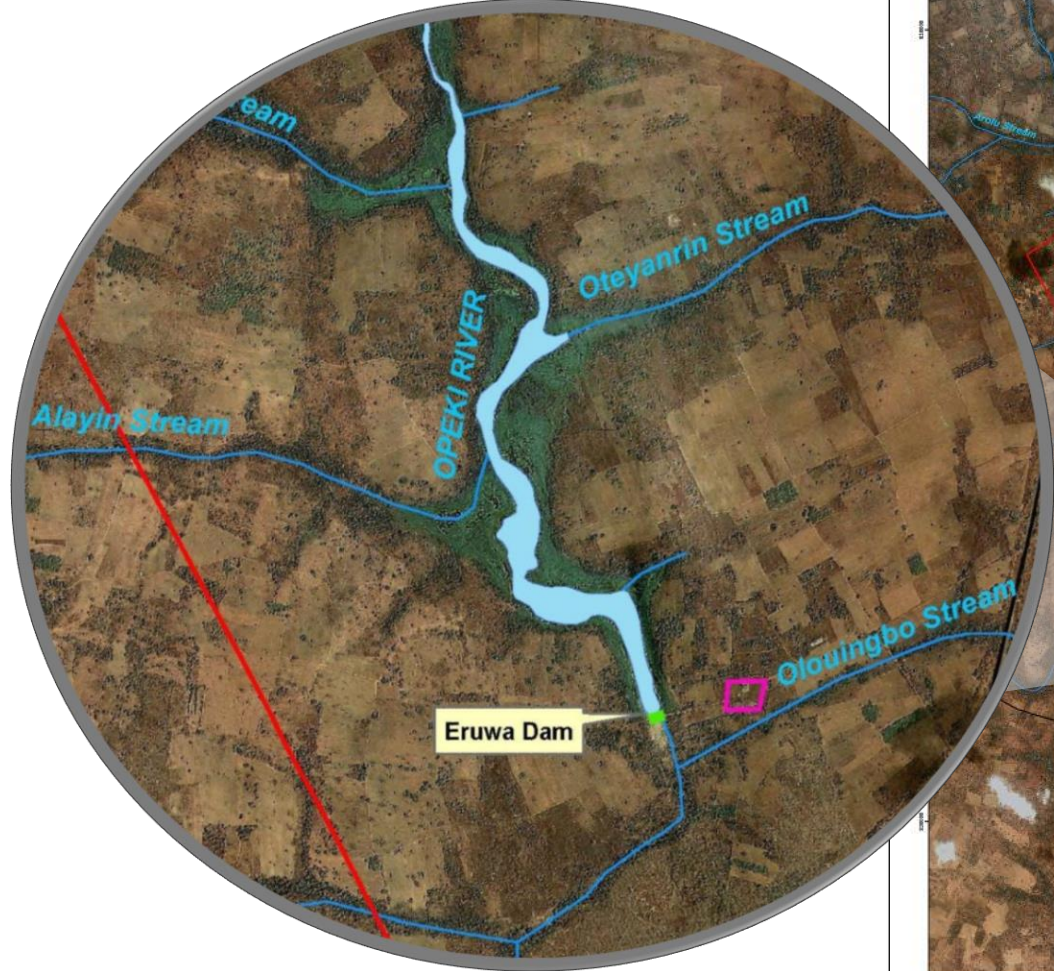
Water Bodies

- Water bodies like lakes, rivers, streams, and dams are captured from the Orthophoto.



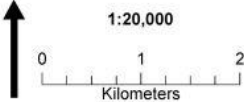
Eleyele Lake

Water Bodies



ERUWA FARM

- Dam
- Eruwa_Farm_Boundary
- Stream
- Roads
- █ River
- █ Village
- █ Urban Area



Building Enumeration

The number of buildings in Oyo State’s major cities (Ibadan, Shaki, Iseyin, Kishi, Oyo, and Ogbomosho) was requested.

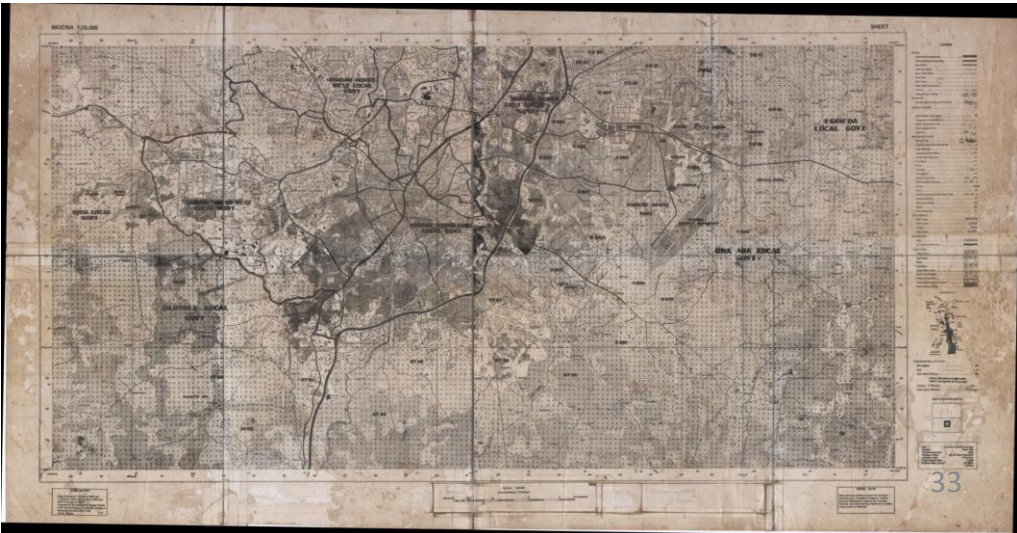
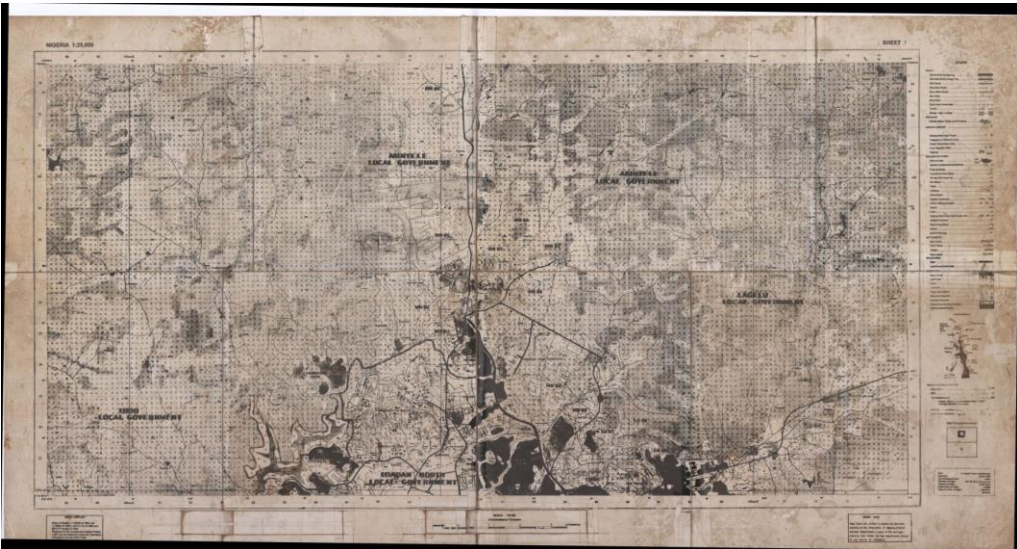
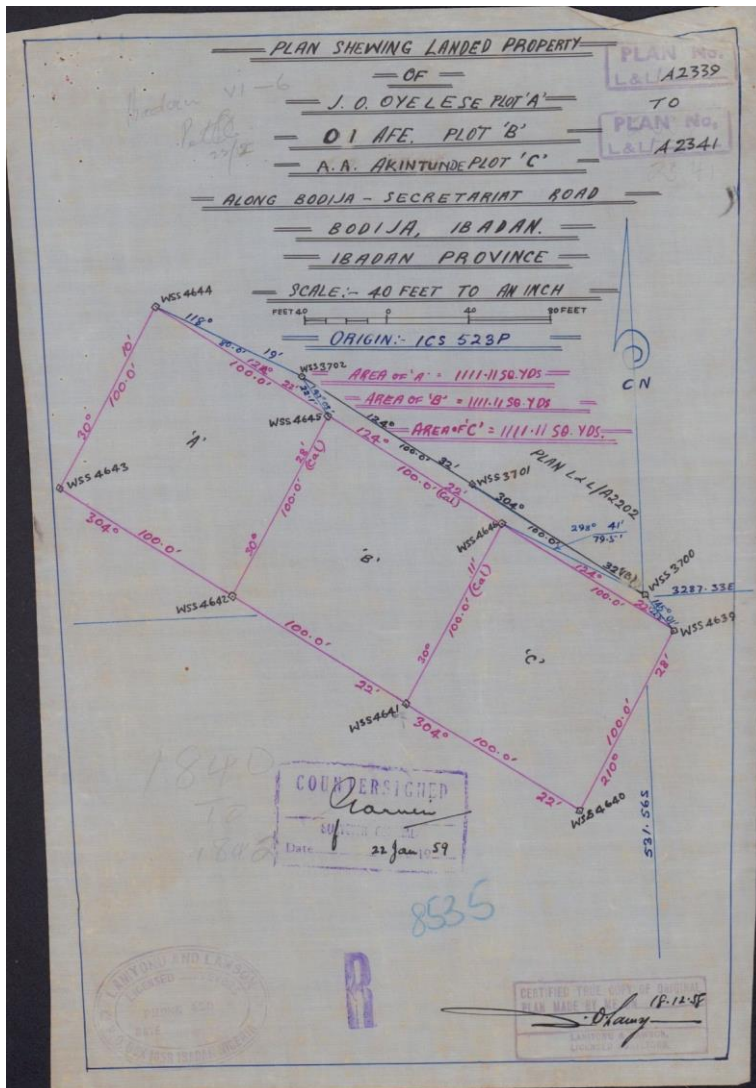
SN	Location Name	Coordinates		Buildings Estimate Number
		X	Y	
01	KISHI	593380	1003497	9,838
02	IBADAN	602189	817483	516,560
03	ISEYIN	564514	881693	28,992
04	SHAKI	544503	958844	30,954
05	OGBOMOSHO	638554	898266	58,780
06	OYO	603127	867044	75,451
			TOTAL	720,575



The process was done by creating point feature class on GIS software, digitizing the Houses falling in the 10 c.m orthophotos, and storing the data in OYOGIS database.

Billing Areas

Using old maps, survey plans, and Orthophoto images, OYOGIS was able to create the billing areas and store them in the Database.

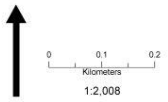


Billing Areas



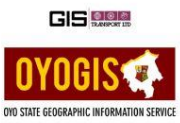
Ibadan North-West L.G.A. Billing Areas

Billing Areas
 L.G.A.

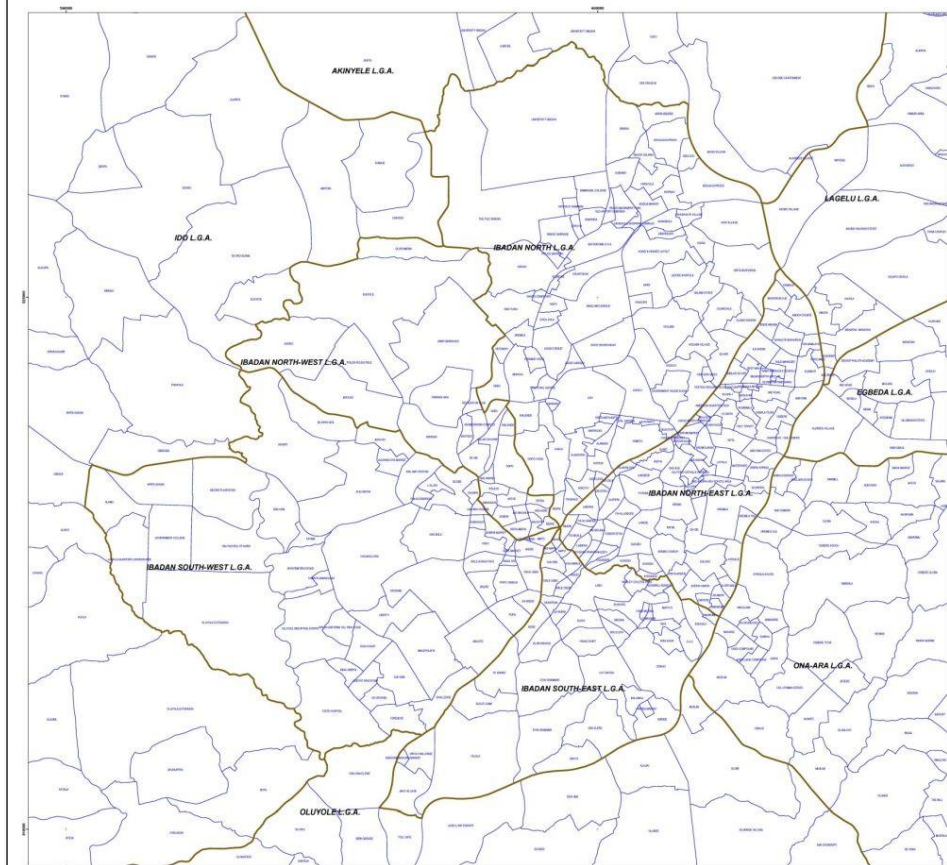


Coordinate System : UTM Zone 31N
 Datum : MINNA
 Units : Meter
 Map Size : A0

Notes:
 1) Produced by OYO Geographic Information Service (OYOGIS), January 24, 2020.
 2) Date Of Orthophoto Acquisition : Dec, 2017

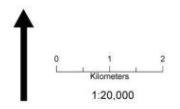


IBADAN CITY_Billing_Areas_01_A0



Ibadan City Billing Areas

Billing Areas
 L.G.A.



Coordinate System : UTM Zone 31N
 Datum : MINNA
 Units : Meter
 Map Size : A0

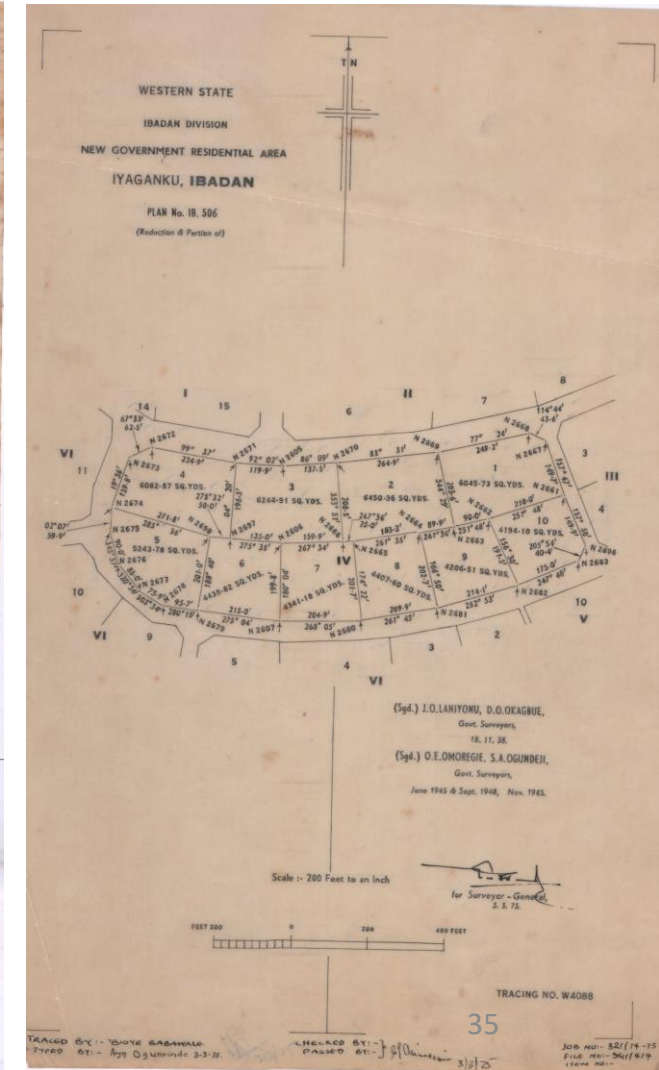
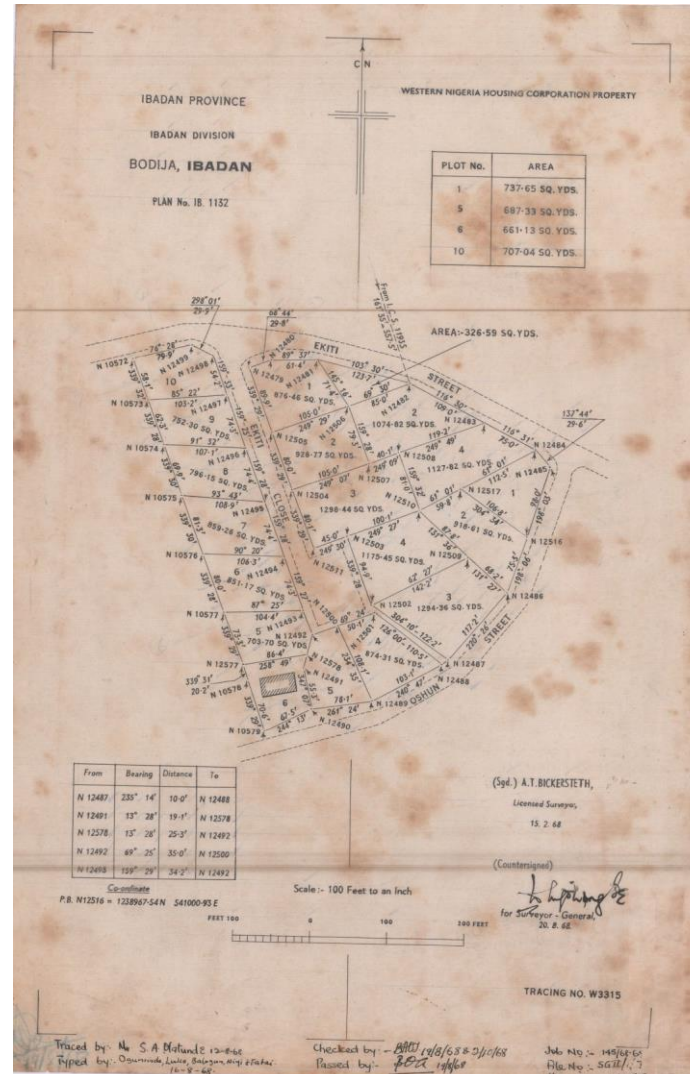
Notes:
 1) Produced by OYO Geographic Information Service (OYOGIS), January 24, 2020.
 2) Date Of Orthophoto Acquisition : Dec, 2017



IBADAN CITY_Billing_Areas_01_A0

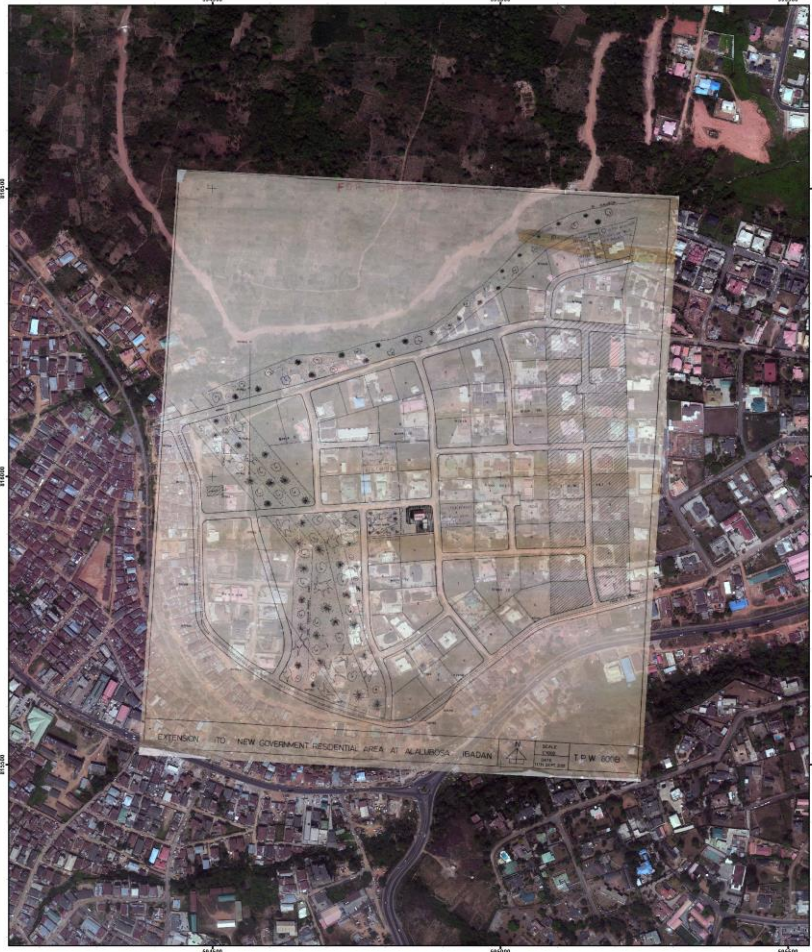
Data Capture


- Layout plans, Survey plans, and TPWs are scanned then geo-referenced based on the coordinates, bearings, and distances found on the plan. After overlaying them on the orthophotos we can confirm the data and correct locations.




ALALUBOSA, IBADAN

TPW 800B






OYO STATE GEOGRAPHIC INFORMATION SERVICE




Scale 1:5,000



COORDINATE SYSTEM

Grid: Meters UTM Zone 31E
 Projection: Transverse Mercator
 False Easting: 500000.0
 False Northing: 0.0
 Central Meridian: 8.0
 Scale Factor: 0.9996
 Latitude Of Origin: 0.0
 Linear Units: 1.0




© 1992, 2011, 2012
 TPW800B_001_A3


BODIJA, IBADN

IB 1132






OYO STATE GEOGRAPHIC INFORMATION SERVICE




Scale 1:2,000



COORDINATE SYSTEM

Grid: Meters UTM Zone 31E
 Projection: Transverse Mercator
 False Easting: 500000.0
 False Northing: 0.0
 Central Meridian: 8.0
 Scale Factor: 0.9996
 Latitude Of Origin: 0.0
 Linear Units: 1.0




© 1992, 2011, 2012
 IB 1132_001_A3


IYAGANKU, IBADAN

IB 506

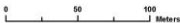




OYO STATE GEOGRAPHIC INFORMATION SERVICE




Scale 1:2,000



COORDINATE SYSTEM

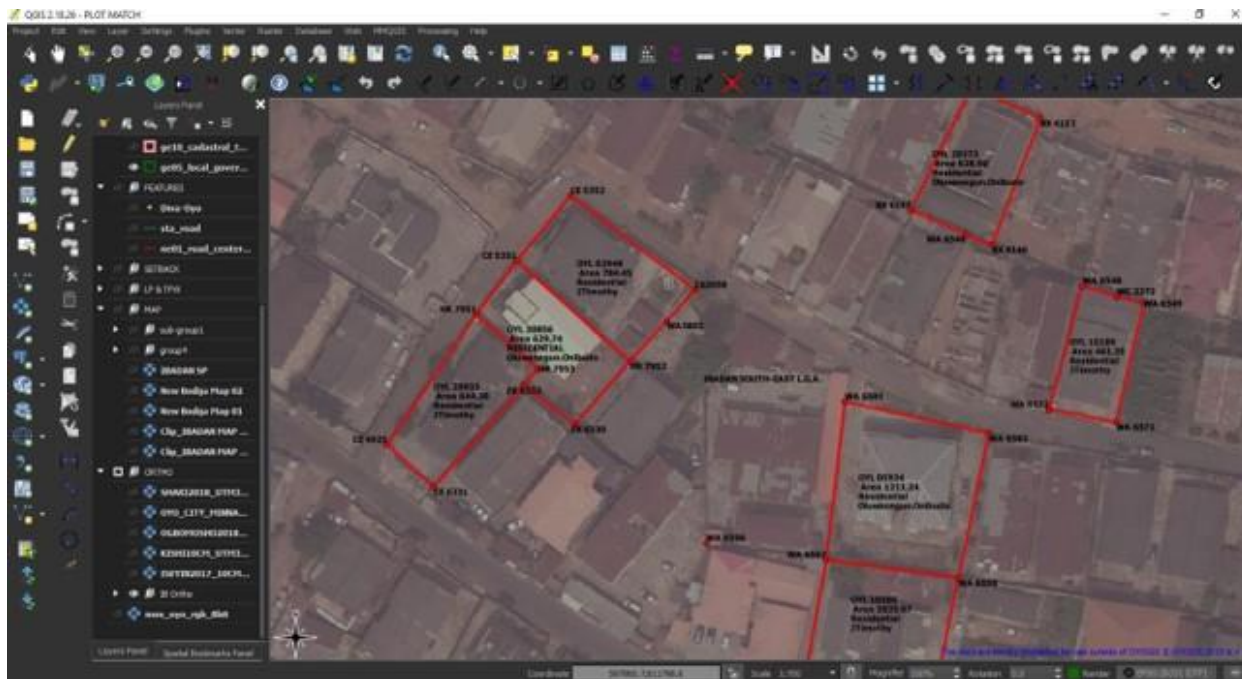
Grid: Meters UTM Zone 31E
 Projection: Transverse Mercator
 False Easting: 500000.0
 False Northing: 0.0
 Central Meridian: 8.0
 Scale Factor: 0.9996
 Latitude Of Origin: 0.0
 Linear Units: 1.0



© 1992, 2011, 2012
 IB 506_001_A3

Land Parcels

- Every survey plan found within any land file as well as the survey plans received from the survey department are geocoded and plotted to a layer in the Database. The information of the property and the owner are then entered as attribute to the plot.

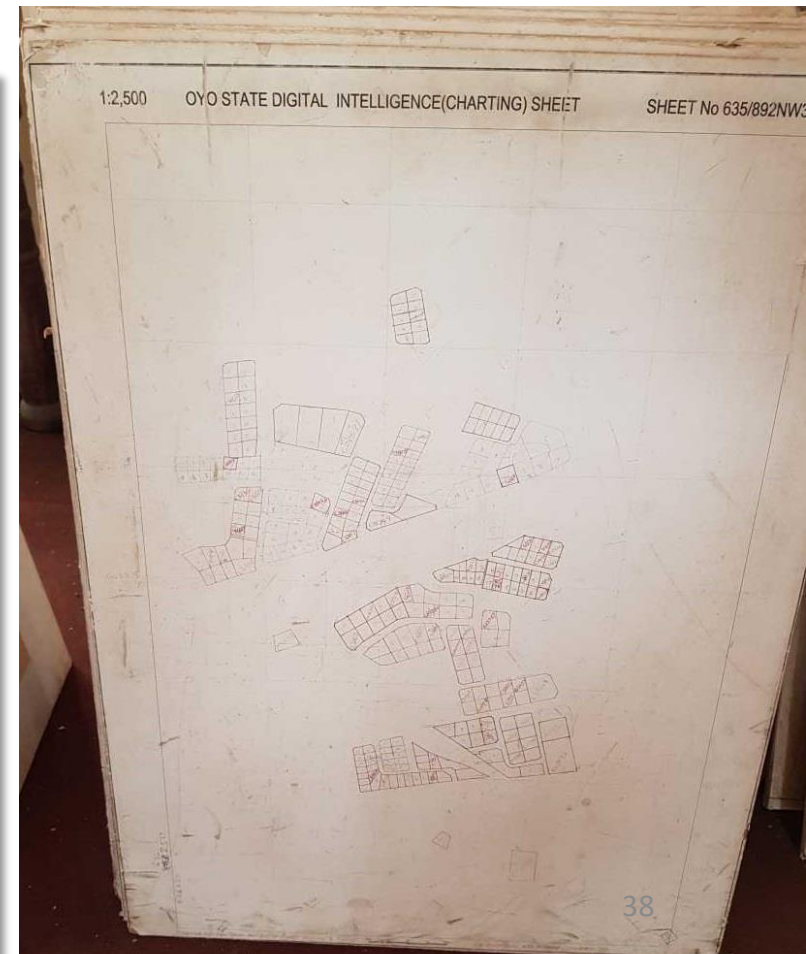


ca01_parcel_main - Feature Attributes

file_no_land	CIVL 05934
general_lu	Residential
detail_lu	Accommodation
general_lu_abr	RES
detail_lu_abr	ACM
purpose_abr	PRVR
document	
remark	
surveyed_by	
surveyed_date	1978-02-02T00:00:00
ds_created	2019-03-01T14:32:58
ds_created_by	Oluwasegun.Oribudo
ds_modified	2019-03-01T14:32:58
ds_modified_by	Oluwasegun.Oribudo
ds_geom_modified	2019-03-01T14:34:13
ds_geom_modified_by	Oluwasegun.Oribudo
usage	
billcode	AA
billarea_desc	FELELE
lga_code	SE
lga_desc	IBADAN SOUTH-EAST L.G.A.
district_code	SEDA
district_desc	FELELE
file_number	
allocation_status	
purpose	Private Residential

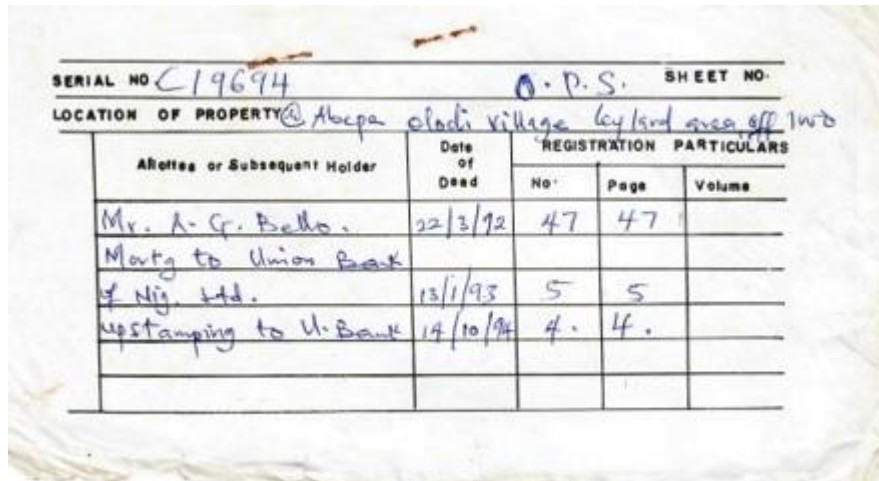
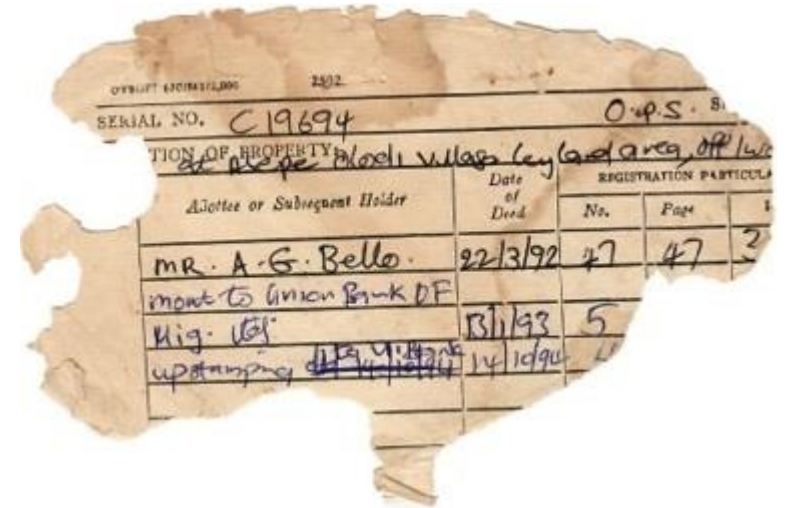
Charting

- Using the information gathered and the digitized plots, now the charting can be done directly from the system instead of the manual process.



Cards Captured

- C of O property card usually called **C-card** with transaction history of their specific property are being captured.
- More than 30,000 cards were entered in OYOGIS database. Which make searching for a card easier and save much time.



Cards Captured

- Files created on Merlin are also linked to their card information at the point of creation. This will allow the user to see the transaction history of the property before proceeding with the file.

File - Search - Bulk Operations - Other Tools - DMS - Billing - Customer Service - Home Welcome JTIMOTHY! CLog off

CofO Card Index

Card Number File Ref Number Volume Number

Register Number Reference to card Search

Card Number	Plan Number	Receipt Number	File Reference	Volume Number	Register Number	Page Number	Transaction Type	Description	Reference To Card	Date	Status
C019694	O.P.S				4	4	Up-Stamping	TO UNION BANK		14-Oct-1994	
C019694	O.P.S				4	4	Up-Stamping	TO UNION BANK		14-Oct-1994	
C019694	O.P.S				47	47	C of O	MR. A.G. BELLO @ ABEPE OLODI VILLAGE LEYLAND AREA OFF IWO		22-Mar-1992	
C019694	O.P.S				47	47	C of O	MR. A.G. BELLO @ ABEPE OLODI VILLAGE LEYLAND AREA OFF IWO		22-Mar-1992	
C019694	O.P.S				5	5	Mortgage	TO UNION BANK NIG LTD		13-Jan-1993	
C019694	O.P.S				5	5	Mortgage	TO UNION BANK NIG LTD		13-Jan-1993	

Prev 1 Next

Merlin - Ver 1.400

Application List

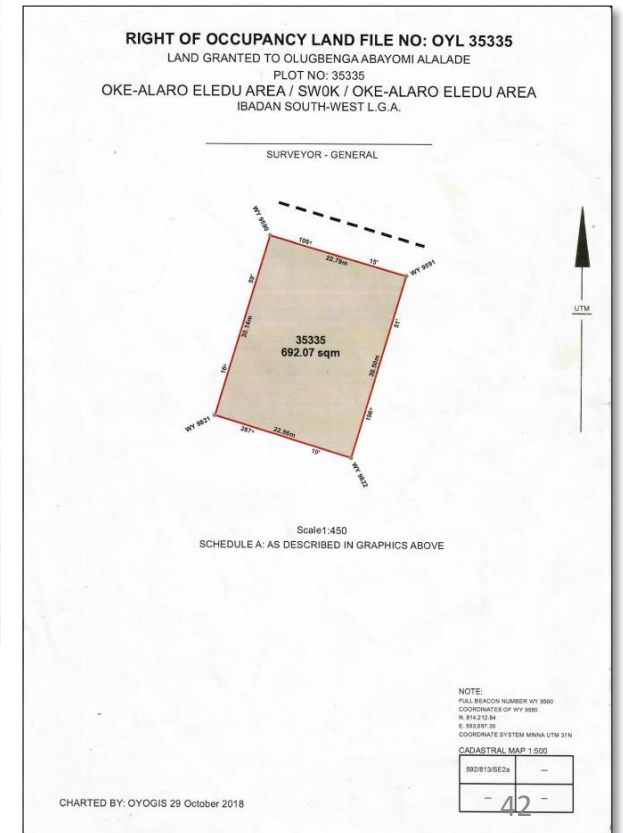
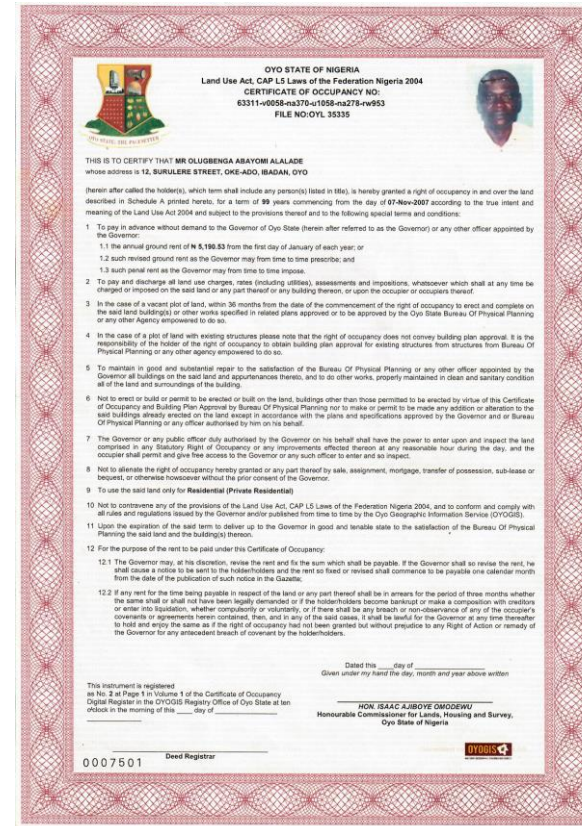
Application Type	Application Date	Created By	Modified By	Application Status	
Recertification for individual	21-Jan-2020	Omolara Ajboye	Omolara Ajboye	Lodged	

File Historic Data

Card Number	Plan Number	Receipt Number	File Reference	Volume Number	Register Number	Page Number	Transaction Type	Description	Reference To Card	Date	Status
C027192	O.P.S			3417	26	26	Mortgage	FROM O. MUFUTAU TO OYO STATE POST/P/S/T/S/H/BOARD		18-Jun-2004	
C027192	O.P.S			3428	15	15	C of O	MR. OWOOLA MUFUTAU LAND AT AWOTAN, NEAR AWOTAN GRAM. SCH. OFF AKLIFO ROAD, IBADAN		03-Oct-2003	
C027192	O.P.S			3663	43	43	Deed of Release	FROM OYO STATE TEACHING SERVICE HOUSING BOARD TO MR.OWOOLA MUFUTAU O.		22-Feb-2013	

CofO

- After all the data is collected and keyed-in to the database together with geometry of the parcels, it will be possible to process a file and print an offer or certificate of occupancy (CofO).



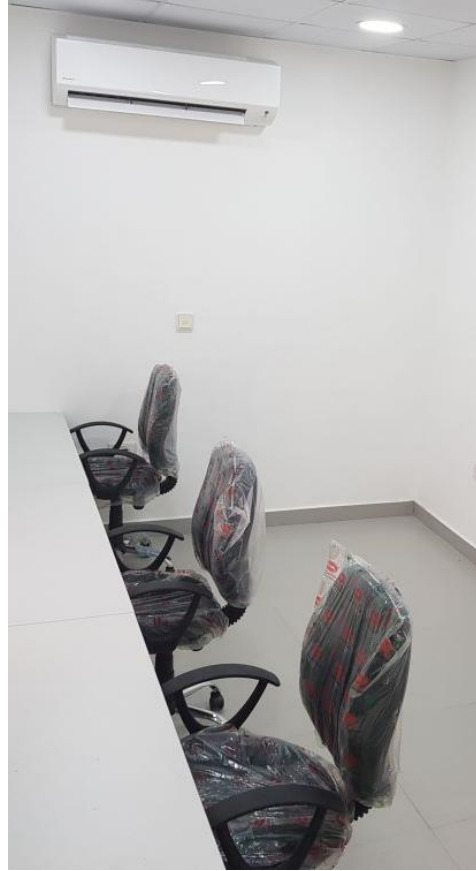
Office Infrastructure

- Office Infrastructure in the annex to the ministry of Lands now known as GIS building, now comprising of 6 offices with furniture, A/C, electrics and network, toilets, etc. The Service Centre hosting temporary customer service, production offices, map shop, archive and management office. These facilities support 65 computer seats.



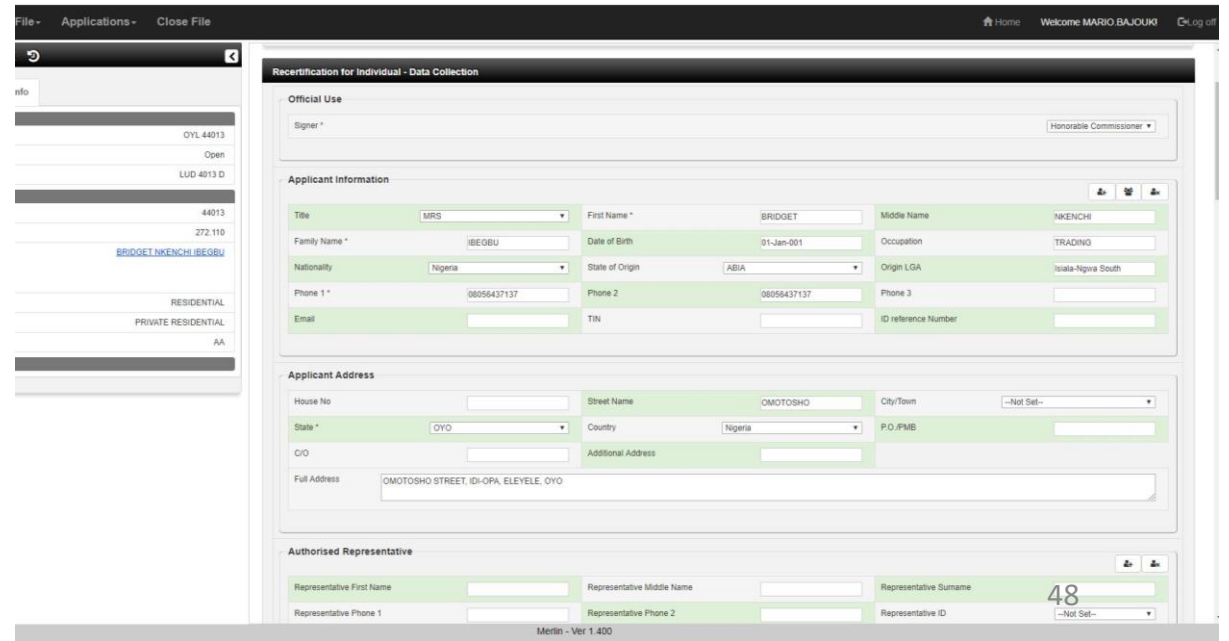
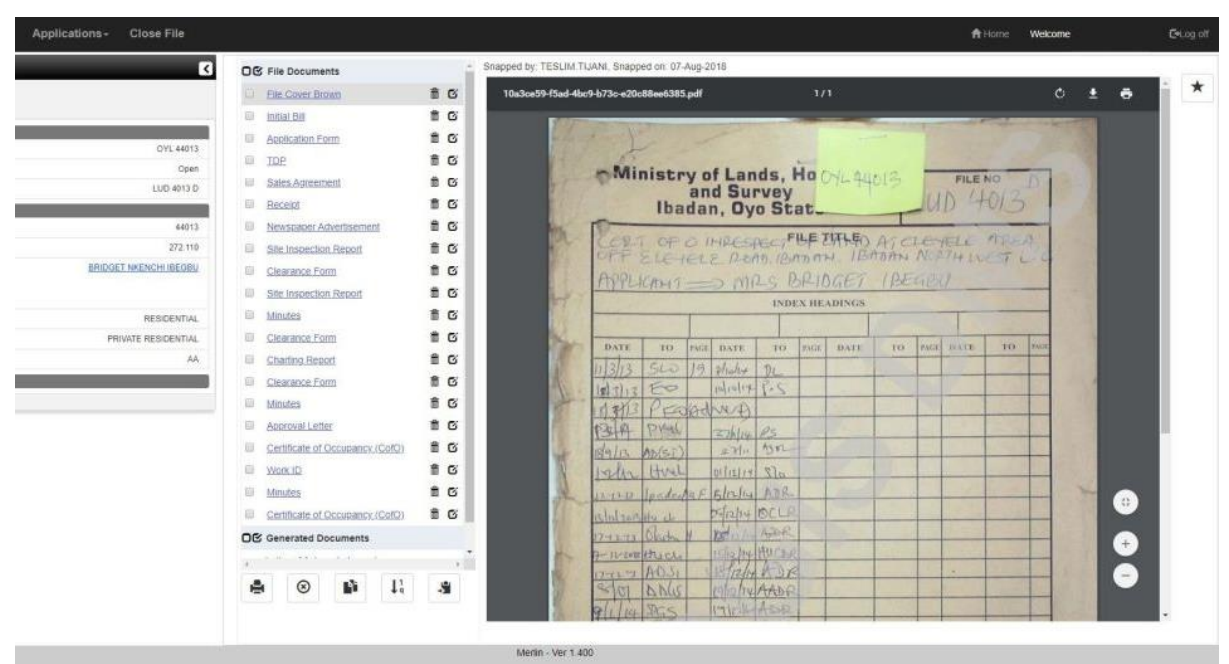






Technical Infrastructure

- The OYOGIS technical infrastructure comprises all the ICT hardware components (the network, servers, laptops, etc.) and the software systems – Merlin, Postges database, etc. All the network components are secure and robust, scalable as OYOGIS grows over the next years.
- Two critical ICT tools are laptops and document cameras. These are deployed in many situations, including customer service, data capture and the mailroom, and as such are a good indicator of system growth over time.
- The Merlin Software Platform has been configured, reconfigured and continuously optimised since deployment in early 2018. Merlin has always been set up for property registration, statutory recertification and direct allocation. Features have been added as required, sequenced to the introduction of service infrastructure (workflows, documentation, etc.) and trainings.
- Merlin is now one of the most advanced land administration software platforms in use.



Staff

- The OYOGIS staff comprises 25 professional and technical ministry staff, 5 GIS/T professional staff, and 2 GIS/T consultants.
- An assessment of 221 ministry staff was conducted early 2018.
- Continuous capacity building and ‘on the job’ training.



Deliverables (Completed)

S/N	Activity	Deliverable	Remark	S/N	Activity	Deliverable	Remark
001	Archive Lands	FTMS	File Tracking Management System	016	ICT Platform	Monitor	6 Delivered
002	Certificate of Occupancy	CofO Forms	10,000 Form	017	ICT Platform	Networking	For all offices including Firewall, switches, patch pannels, cable organizer, cat6 cables,...
003	Digital Aerial Mapping	Contour Lines	1m	018	ICT Platform	Server	2 Servers delivered with UPS
004	Digital Aerial Mapping	Orthophoto	10cm, coverong 3,000 km2	019	Land Cover	LULC	Land Use Land Cover data classification
005	Digital Aerial Mapping	Satellite Image	70cm, covering Oyo state	020	Mass Data Capture	TPW	74 Captured
006	Digitizing from Maps	District Boundaries	Inside Ibadan Central	021	Office Infrastructure	1st Office GF + Toilets	Furnished Office
007	Digitizing from Maps	DIVA & NGA GIS Data		022	Office Infrastructure	2nd Office GF	Furnished Office
008	Digitizing from Maps	SRTM	SRTM 30m elevation data	023	Office Infrastructure	First Floor	Total of 4 Offices, toilets, and store
009	External Maps & Data	Topo Maps	59 Topo Maps	024	Office Infrastructure	Furniture	Delivered for all offices including Tables, Chairs, Cabinets, shelves...
010	ICT Platform	A0 Printer	1 Delivered	025	Office Infrastructure	New Roof Installed	
011	ICT Platform	A0 Scanner	1 Delivered	026	Office Infrastructure	Paper Shredder	1 Delivered
012	ICT Platform	A3 Printer	1 Delivered	027	Office Infrastructure	Paper Trimmer	1 Delivered
013	ICT Platform	A4 Scanner	1 Delivered	028	OYOGIS Logo Design	Logo design	
014	ICT Platform	Biometric Machine	1 Delivered	029	Technical Infrastructure	Merlin System	Land management Software
015	ICT Platform	Document Camera	20 Delivered				50

Deliverables (Outstanding)

S/N	Activity	Status	Deliverable	Remark	S/N	Activity	Status	Deliverable	Remark
030	Digitizing from Maps	Ongoing	Billing Areas	603 Billing Areas	043	ICT Platform	Pending	Internet Access	Main Internet Link
031	ICT Platform	Ongoing	A3 Scanner	1 Delivered, 1 Remaining	044	ICT Platform	Pending	TV	1 Big TV for Meeting Room
032	ICT Platform	Ongoing	A4 Printer	3 Delivered, 12 Remaining	045	Office Infrastructure	Pending	3rd Office GF	
033	ICT Platform	Ongoing	Barcode Reader	5 Delivered, 1 Remaining	046	Office Infrastructure	Pending	Premises	Parking, Landscaping, Drainage, Signage, Bore Hole, Tank
034	ICT Platform	Ongoing	Label Printer	2 Delivered, 1 Remaining	047	Technical Infrastructure	Pending	Access Control	For Main Doors
035	ICT Platform	Ongoing	Laptops	72 delivered, 10 Remaining	048	Technical Infrastructure	Pending	ArcGIS	1 Remaining
036	ICT Platform	Ongoing	Projector	1 Delivered. 1 Remaining	049	Technical Infrastructure	Pending	CCTV	
037	Mass Data Capture	Ongoing	Beacons	13,618 captured	050	Technical Infrastructure	Pending	GPS Camera	5 Remaining
038	Mass Data Capture	Ongoing	Index Cards	31,702 captured	051	Technical Infrastructure	Pending	Handheld GPS	5 Remaining
039	Mass Data Capture	Ongoing	Labelling & ReJacketing	5,971 rejacketed	052	Technical Infrastructure	Pending	Mobile GIS	3 Remaining
040	Mass Data Capture	Ongoing	Land Files	5,535 Captured	053	Technical Infrastructure	Pending	Mobile Phone	2 Remaining
041	Mass Data Capture	Ongoing	Layout plans	381 Captured	054	Technical Infrastructure	Pending	Power	Main Generator & Tank
042	Mass Data Capture	Ongoing	Survey Plans	7,493 Captured	055	Technical Infrastructure	Pending	TerraGO	1 Remaining
					056	Technical Infrastructure	Pending	VOIP Phone	10 Remaining
					057	Technical Infrastructure	Pending	Web Portal	
					058	Transportation	Pending	Pickup	1 Remaining

Questions?